

## **Installation-Manual Option-Box (INTA 02)**

### **MV-Serie**



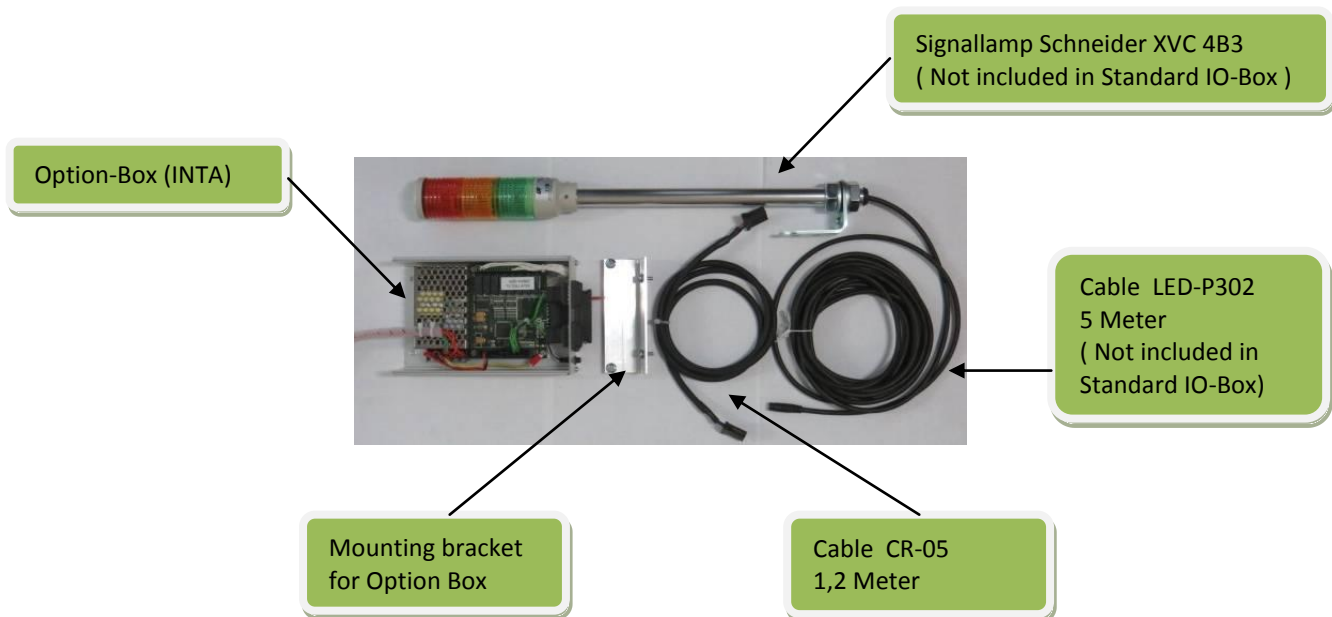
Picture shows the Option with LED Light!

## Table of contents

1. List of Material .....	2
2. Installation of Option Box .....	3
2.1 <a href="#">Installation of mounting bracket and Option Box</a>	
2.2 <a href="#">Connection of the Option Box to Power supply</a>	
2.3 <a href="#">Connection of the Option Box to the Databus</a>	
3. Drawings .....	5
3.1 <a href="#">Drawing Option Box</a>	
3.2 <a href="#">Specifications</a>	
4. Programing Examples .....	6

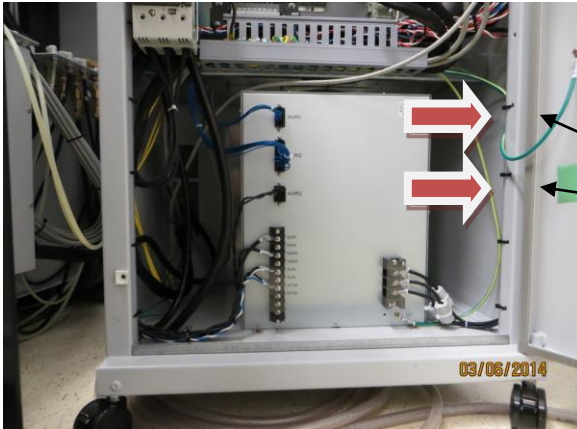
### 1. List of Material

Please check before Installation for completeness!

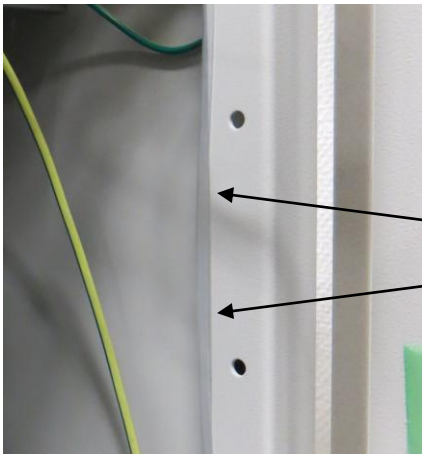


## 2. Installation of Option Box

### 2.1 Installation of mounting bracket and Option Box



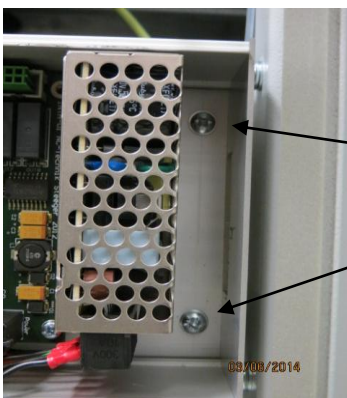
Remove the two cable ties



Loosen the edge protecting profile to install the mounting bracket flush to the metal

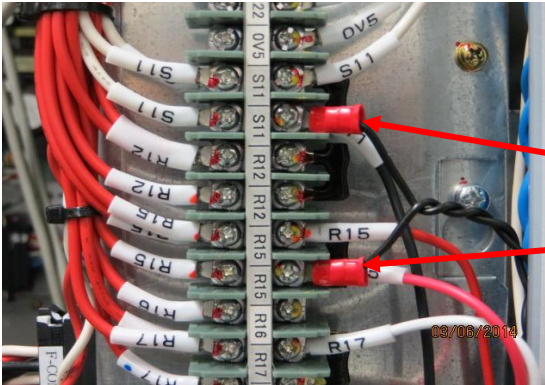


Install the mounting bracket with the two M5 Screws



Install the option box with the two M4 screws

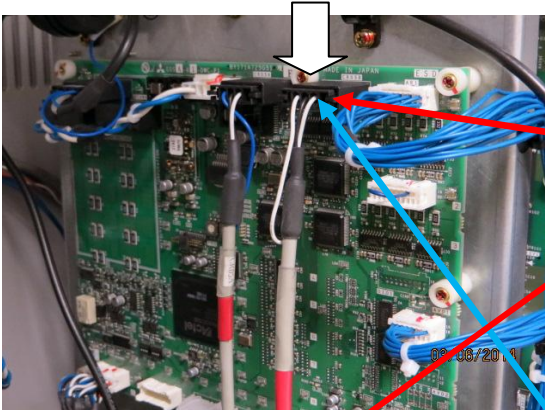
## 2.2 Connection of the Option Box to Power supply



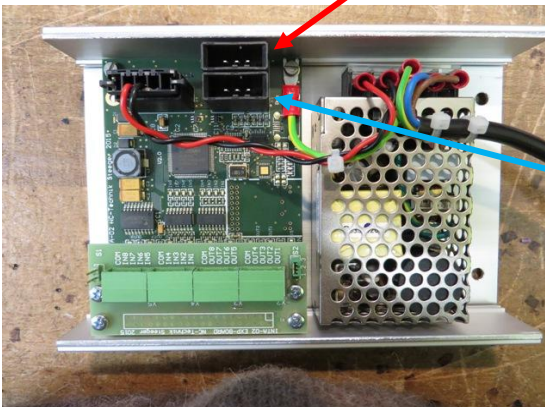
Connect the two wires from the power supply cable to R15 + S11. ( 100VAC )

Connect Ground to the metal-plate.

## 2.3 Connection of the Option Box to the Databus

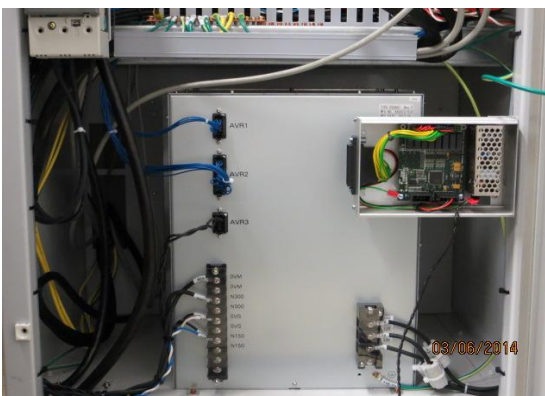


Disconnect the right connector (CR-05) from the oscillation card and plug it to the upper socket on the option box.



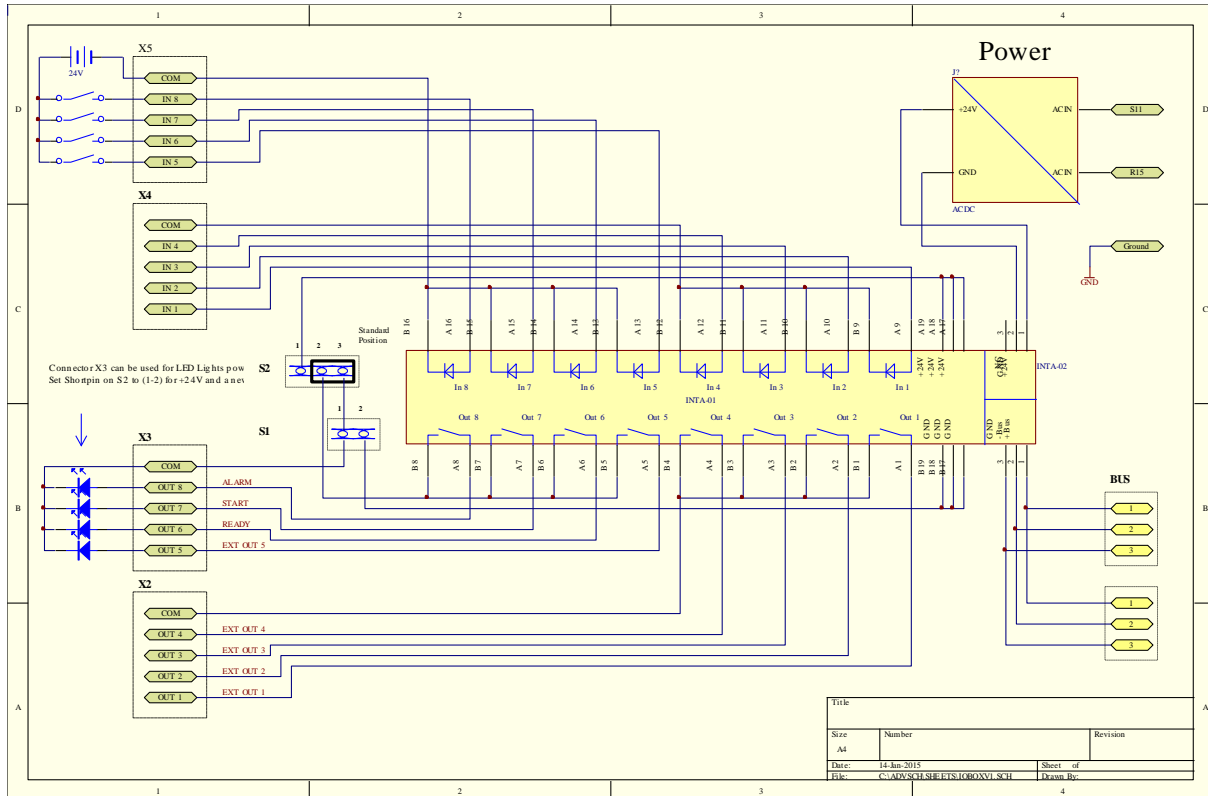
Now connect the free CR-05 socket on the oscillation card with the cable "CR05-1.2Meter" to the lower socket on the option box.

**Don't forget to fix all cables in the generator cabinet with cable ties!**

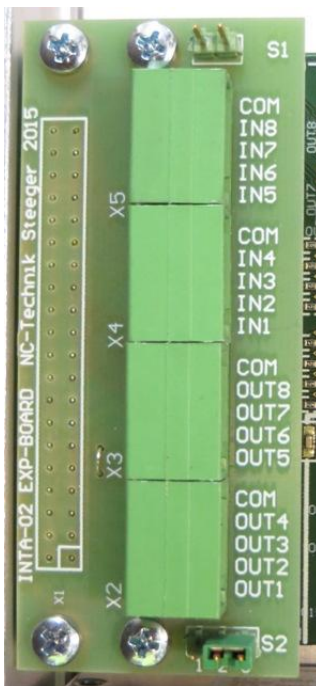


### 3. Drawings and Specifications

#### 3.1 Drawing Option Box INTA-02



#### 3.2 Specifications



Install the Signallight at X3 and check the Shortpins:

S1: SET

S2: 1-2

Now the Signallight is powered by this interface.

>> Also Out5 is powered by the interface !! <<

For potential free output (5-8)

S1: NOT SET

S2: 2-3

Out 1-4 is potential free!

Specifications:

- Max Wire diameter = 0,5mm<sup>2</sup>
- Max Current for LED's = 0,5A
- Outputs Relaiscontacts: 30V 1A
- Input Signals 24V (12V-28V max)

## 4. Programing Examples

### 4.1 Outputs

Outputs 1-5 can be set with M-Code M60 – M69

Pin	Name	Bit	Set Signal (1)	Clear Signal (0)
<b>X2-1</b>	Ext Out 1	0	M60	M61
<b>X2-2</b>	Ext Out 2	1	M62	M63
<b>X2-3</b>	Ext Out 3	2	M64	M65
<b>X2-4</b>	Ext Out 4	3	M66	M67
<b>X3-1</b>	Ext Out 5	4	M68	M69
<b>X3-2</b>	System Ready		On with Ready On	--
<b>X3-3</b>	Start		On during Program Running	--
<b>X3-4</b>	Alarm		On with Alarm	--

Example:

```
%  
M60      / Extern Out 1 On  
M62      / Extern Out 2 On  
G04X5.  
M63      / Extern Out 2 Off  
M61      / Extern Out 1 Off  
M02  
%
```